

# SMITHFIELD CITY

## General Plan : Appendix A Parks & Trails Master Plan

October 2017



# Table of Contents

**Introduction.....2**

- Purpose of a Parks and Trails Master Plan..... 2
- Process ..... 3
- Community Character..... 3
- Vision ..... 3
- Guiding Principle..... 3
- Goals and Objectives ..... 4
- Population and Demographic Characteristics ..... 4
- Parks & Recreation Opportunities..... 4

**Recreation Classification Systems ..... 6**

- Purpose of Definitions ..... 6
- Definition of Project Improvements and System Improvements .. 6
- Definitions, Standards and Guidelines for Facilities & Trails..... 7

**Parks & Trails Level of Service and Analysis... 16**

- Park & Trail Level of Service..... 16
- Existing Park and Trail Inventory ..... 19
- System Recommendations ..... 20
- Proposed Trails ..... 20
- Other Nearby Recreational Opportunities..... 20

**Implementation ..... 20**

- Strategy Plan..... 21



## Attachments & Appendices

- Attachment 1: Existing and Future Parks Map
- Attachment 2: Existing and Future Trails Map
- Attachment 3: Inventory of Existing Parks and Trails
- Attachment 4: Walkable Park Access Map
- Attachment 5: Existing and Future Parks with Walkable Access Map



# Introduction

## Purpose of a Parks & Trails Master Plan

Parks, trails, and open spaces contribute to the quality of life in Smithfield City. They provide recreational opportunities, revitalize neighborhoods, build healthy communities, encourage economic development, and create a sense of place for residents. This plan has been developed to provide a “road map” that will give direction and offer a framework to guide future planning, design, and implementation decisions. By planning now, before the pressures of growth force the city to accept whatever development comes, the city can direct development to maintain the character and values that the community embraces.

This report, along with the accompanying GIS database and maps, identifies the recreation amenities currently offered in the city and suggests additional parks and trails that may be required in the future in order to meet the city’s growth needs. This plan establishes a base line of service, and quantifies the types of recreational

improvements needed to maintain it. Additionally, this plan will provide a foundation for developing a Capital Improvements Plan and an Impact Fee Facilities Plan (IFFP). This plan does not designate or document open space. It does however give a definition of open space to help guide Smithfield as it determines when and how to incorporate open space throughout the community in sensitive areas and within new developments.

Park land and the elements within it is set aside for the enjoyment and recreation of the city’s residents. Parks offer space which can be programed in a variety of ways to meet the resident’s recreational needs. Trails or pathways are a means of transportation and often link together parks, neighborhoods, and other destinations. Trails are becoming more and more popular as a means to get outside, recreate, exercise, and in some cases, commute.

The visual scene throughout Smithfield is largely impacted by both public and private open space. Protection of open space, whether within the city’s



# Introduction

limits or along the hillsides or in agricultural areas, may strengthen the rural image and culture of the community and ensure the habitats and natural environments of the area are protected against development.

## Process

An Advisory Committee made up of city staff, members of the council and planning commission, and others was created to guide the General Plan update and the Parks and Trails Plan. A review and work session with the Smithfield City Council and Planning Commission was held to allow them to review and comment on the two plans. A public hearing was held to receive comments from the residents of Smithfield City. The comments were then addressed and added as the Council and Commission deem necessary.

## Community Character

Smithfield City is located in the beautiful Cache Valley surrounded with stunning mountain views,

rivers and streams, and easily accessible canyons. Historically, the area depended predominantly on the agricultural industries of farming and ranching. Cache Valley was originally settled by trappers during the early 1800s, attracted by its rich supply of wildlife and wild game. In 1859, the first settlers moved north of the Logan settlement to focus on agricultural prospects. The area was surveyed, and the resulting settlement was named Summit. In 1860, the town was renamed Smithfield City in honor of the first Mormon Bishop, John G. Smith.

## Vision

Provide affordable recreational, physical, and cultural opportunities for all of Smithfield City's residents, with a focus on families, youth development, and building healthy communities. The programs and services offered by the city will reflect the public's needs and interests and provide for safe, attractive, and well-maintained facilities.



# Introduction

## Goals & Objectives

- » **Maintain and reflect the rural character in all parks and trails projects**
- » **Provide recreation opportunities for all ages and user groups**
- » **Promote health and wellness**
- » **Strengthen community image and sense of place**
- » **Provide access to all parks and trails**
- » **Support economic development**
- » **Protect environmental resources**
- » **Provide Smithfield City with a living document to guide all park and trails planning, design and development**

### Guiding Principle

Enrich the lives of the residents by providing safe, welcoming parks and recreation facilities and affordable, diverse recreation and human services activities for people of all ages to play, learn, contemplate, build community, and be good stewards of our environment.

### Population & Demographic Characteristics

The 2010 census results list Smithfield's population at 9,495 and the 2015 updated population estimate from the census the population was estimated to be 11,043, an increase of 1,548 (16%) from 2010. Within Smithfield's 5.16 square miles, the population density is 2,140 people per square mile. This ranks Smithfield as the second largest city in Cache County. There were approximately 2,945 households, out of which

36.5% (2010) had children under the age of 18 living with them. The median resident age is 29 years old. The average household size was 3.47 (2010).

### Park and Recreation Opportunities in Smithfield City

Access to nature and parks and recreation has played a vital role for residents in the transition from a rural farming community to a more urban area. Today, the city's system of urban parks, open space, trails, recreation centers, programs, and special events are major contributors to Smithfield's acclaimed high quality of life.

Smithfield's parks and recreation system is a vibrant network of diverse recreation opportunities that is a direct result of decades of work, and investment by community members and leaders. The city's parks and recreation system

# Introduction

is a major community asset that repays those investments every day. The system enhances Smithfield by increasing property values; improving neighborhoods, families and community members; and enhancing lives and job performance as individuals' exercise, play and relieve stress. The green, beautiful and sustainable urban environment augments Smithfield's majestic natural setting. The Parks and Trails Master Plan is intended to help today's leaders and community members make sound and fruitful decisions that will help the community maintain and enhance their system of urban recreational assets and opportunities for years to come.

Smithfield's recreation opportunities include 70 acres of developed park land that include a number of ball fields, pavilions, playgrounds, volleyball areas, horseshoe pits, and an equestrian park. The city also has many miles of paved and unpaved trails that wander along canals and through the canyons. The city-owned Birch Creek Golf Course is ranked as one of the top courses in the state and top 500 courses in the nation. They have a fully equipped recreation center and pool that

is managed and maintained in conjunction with the local high school and a civic center with a full size gym and youth center with gym and kitchen facilities.

Smithfield has many recreation, social, and cultural programs that include sports, biking, dance, summer camps, street markets, movie nights, and art, music, and theatre opportunities. The city's "Health Days" are an important annual event that includes fun run, parade, golf tournament, horse pull, musical competitions, children's theatre, and bike ride. This event brings the community together and has deep seeded roots that stem from events that the early Smithfield settler's started over a 100 years ago.

Today Smithfield is regarded as a progressive community with a vibrant recreation program. It is known for its high quality of life, physically active community members, and many premier outdoor destinations that are within a short walk, bike, or quick trip in the car. The closeness of Utah State University, which enrolls approximately 28,000 students, adds to Smithfield's young family population with an average age of 29 years old.



# Recreation Classification System

## Purpose of Definitions

The following definitions are based on the National Recreation and Parks Association standards tailored to the specific needs of the city. They are listed to provide the city with descriptions, classifications, and characterizations of the types of services and standards to use within the planning document. The size guidelines for the parks are based on the current park sizes that exist within Smithfield at the time the Parks and Trails Master Plan was developed. This information is intended to allow for clarity and consistency while discussing each type of service. Definitions will also serve as important tools for development of impact fees and capital improvement plans.

## Definition of Project Improvements and System Improvements

The city may use the following definitions and descriptions as benchmarks in determining how Smithfield City may define its parks system.

## Project Improvements

Project improvements include facilities that benefit a small area and are generally of little benefit to the community as a whole. They also include private facilities that limit access to the general public. This analysis considers mini-parks under one-half acre and private club areas (i.e. swimming pools, tennis courts, open space, etc.) as project improvements, unless developed by the city. Project improvements cannot be funded through impact fees, receive credit for costs against impact fees, or be considered in the impact fee level of service.

## System Improvements

System improvements are intended to benefit the community as a whole. Only park improvements that service the entire community are considered in the level of service. The impact fees analysis may only include the cost of impact on the system improvements related to new growth. Generally, these improvements are located outside specific developments unless the improvement is provided in addition to the parks needed for the developer to receive full density.



# Recreation Classification System

## Definitions, Standards, and Guidelines for Facilities and Trails

### Park Definitions and Types

#### MINI-PARK

A specialized facility that serves a concentrated or limited population or specific group, such as tots or senior citizens. This facility should be located within neighborhoods and in close proximity to apartment complexes, townhouse developments, or housing for the elderly. When used for detention of storm water, mini-parks are recommended to maintain a minimum shelf area which will remain dry (i.e. not used for detention). Mini-parks are not customarily included in the impact fee level of service for the city's parks because they are usually considered project improvements of a new development. These parks are not included in the city's level of service.

**Typical Park Size:** 5,000 sq. ft. – 1.99 acre

#### Site Characteristics:

- Centrally located in neighborhoods and higher-density residential
- The walking distance should not exceed one-quarter mile nor require the crossing of busy streets
- Appropriate facilities include: children's playground equipment, grassy play areas, picnic tables and shelters, and benches



# Recreation Classification System

## NEIGHBORHOOD PARK

Areas designed for intense recreational activities such as field games, court games, crafts, playground apparatus, skating, picnicking, wading pools, etc. Neighborhood park sites should be suited for intense development, easily accessible to neighborhood populations, and geographically located for safe walking and bicycle access (service radius of one-half mile). A minimum twenty percent of the site area should be dry (i.e. not used for detention). These parks are included in the city's level of service and considered system improvements.

**Typical Park Size:** 2.0 – 7.99 acre

### Site Characteristics:

- Comprises both active and passive recreational activities
- Centrally located to provide direct and safe walking/biking access
- The walking distance should not exceed one-half mile
- Appropriate facilities include: open play areas for softball, soccer, youth baseball, Frisbee, etc., as well as restrooms, parking facilities, picnic areas, shelters, and playgrounds with seating available nearby. Sites should be relatively visible from adjoining streets



*Central Park*



*Sunset Park*



*Mack Park*

# Recreation Classification System

## COMMUNITY PARK

Areas of diverse recreational value including intense recreational facilities, such as athletic complexes and pools, as well as more passive uses such as picnicking, viewing, nature studying, and other types of recreational development. The size and amenities contained within each community park should be based on the planned population to be served. A minimum twenty percent of the site area should be dry (for a 10-year storm event). Community parks should serve the majority of residential areas with overlapping service-area coverage. These parks are included in the city's level of service and are considered system improvements.

**Typical Park Size:** 8.0 – 49.99 acre

### Site Characteristics:

- Comprises both active and passive recreational activities with support facilities such as off-street parking and restrooms
- The walking distance should not exceed three-quarters of a mile
- Appropriate facilities include: fields for formal baseball-softball, soccer, etc., along with picnic facilities, trail/pathway systems, and children's playgrounds. These parks should be located on arterial or collector streets and have landscaped setbacks to buffer active use areas from residential areas as needed



Forrester Acres



# Recreation Classification System

## REGIONAL PARK/PARK PRESERVE

Areas of natural or ornamental quality for outdoor recreation such as picnicking, boating, fishing, swimming, camping, and trail uses, with much of the land reserved for conservation and natural resource management. While they sometimes contain traditional park facilities, like playground structures or tennis courts, regional parks are usually dedicated to one particular use. The location of these parks usually takes advantage of the area's unique, natural, or cultural features. These parks are included in the city's level of service and are considered system improvements.

**Typical Park Size:** 50+ acres

### Site Characteristics:

- Comprises both active and passive recreational activities used to service the needs of the entire region.

## SPECIAL-USE FACILITIES

Public recreation facilities that are set aside for specific purposes. Typical uses include community recreation centers, swimming pools, gymnasiums, rodeo grounds, golf courses, etc.

## SPECIAL-USE AREAS

Miscellaneous public recreation areas or land occupied by a specialized facility. Typical uses of these areas include small or special uses/or specialty landscaped areas, cemeteries, community gardens, streetscapes, viewpoints, or historic sites. Special-use areas are not considered in the impact fee level of service.

# Recreation Classification System

## Open Space Definition and Types

The definitions for open space facilities provide guidance in the determination of appropriate amenities for the community. Open space can be categorized into two types: passive and natural. The following definitions are provided to guide the appropriate location and components for a mix of open space that enhances the quality of life for existing and future residents. Open space can include sensitive areas within the city such as utility corridors, flood plains/wetlands or steep slopes.

### PASSIVE OPEN SPACE

Areas that have had minor, if any, improvements and are set aside, dedicated, designated, or reserved for public or private use. Passive open spaces typically accommodate activities such as picnicking, hiking, bicycling, equestrian, walking, dog park or “off-leash” running areas, neighborhood electric vehicle areas, gardening, agriculture, and aesthetics, etc. Passive open spaces include plazas, greenbelts, buffers, landscaped parkways, peripheral landscape tracts, water or lake features, and entrances into the city or other similar areas. Subject to City Council approval, passive open space may be utilized for a secondary purpose of satisfying storm water retention requirements. Passive open space is property that is not considered sensitive lands.

### NATURAL OPEN SPACE

Unimproved areas in their natural state and set aside, dedicated, designated, or reserved for public or private use. Minimal improvements are allowed in natural open spaces for trails, natural interpretive areas, and limited re-vegetation or landform alterations for trail maintenance, aesthetics, visual relief, and environmental, public safety, and/or emergency purposes so long as the areas disturbed are restored to their natural appearance. Natural open spaces shall not be used for improved drainage purposes. Natural open space includes water features, washes, riverbanks, desert lands, and other similar areas.

# Recreation Classification System

## Trails/Walking Paths

Trails are thought of as a linear route on land with protected status and public access for recreation or transportation purposes such as walking, jogging, hiking, bicycling, horseback riding, mountain biking, and so on. Trails can include open spaces, landscaped areas, and/or trail systems that follow stream corridors, abandoned railroads, power line easements, or other elongated features.

### NATURAL TRAIL

Unpaved, primitive paths intended for pedestrians and mountain bike use, created in the existing dirt and rock environment. They are usually in open, natural areas not following roadways.

### PAVED BIKE/PEDESTRIAN PATHS

Paved bike/pedestrian paths are developed with a hard surface of pavement or concrete. The trails are intended for use by both bicyclists and pedestrians. They should be built to the American Association of State Highway and Transportation Officials (AASHTO) standards.



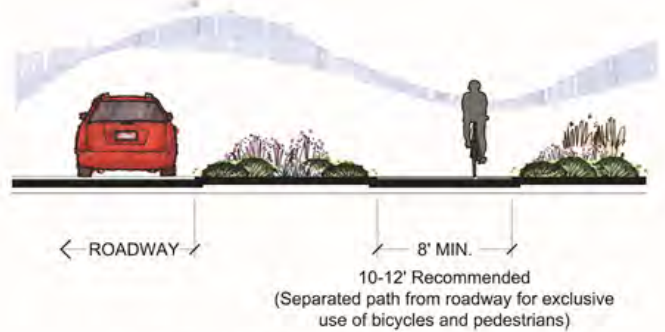
*Heritage Trail*

# Recreation Classification System

## BIKE LANES AND ROUTES

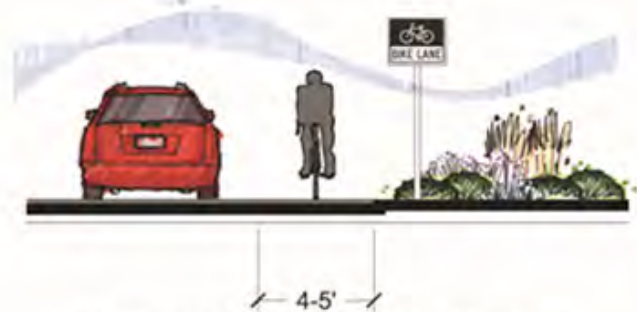
Bike lanes and routes utilize vehicle roadways for bicyclists only to access local facilities and connect to other trails. These lanes and routes should also meet AASHTO bikeway standards:

**1.** Class I Bike and Pedestrian Trails (path) – Paved, hard-surface paths, with a minimum 10-foot- wide tread, and requiring a minimum separation of 5 feet from the roadway. AASHTO standards should be used as design guidelines.



CLASS I BIKE PATH

**2.** Class II Bike Lane - Striped lanes adjacent to the curb on a roadway.



Width depends on parking and edge condition  
(Striped Bike Lane with Bike Lane symbol)

CLASS II BIKE LANE

**3.** Class III Bike Routes - Existing streets with signage for on-street bicycle use.



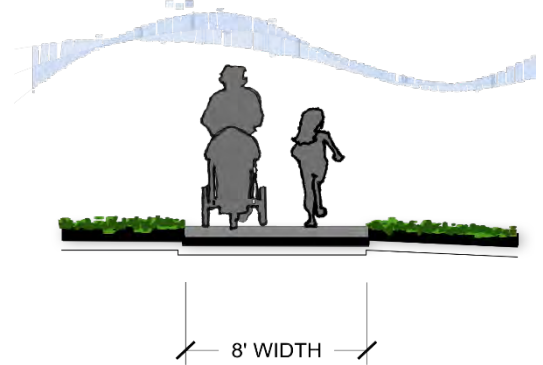
Shared use with pedestrians and motor vehicle traffic.

CLASS III BIKE ROUTE

# Recreation Classification System

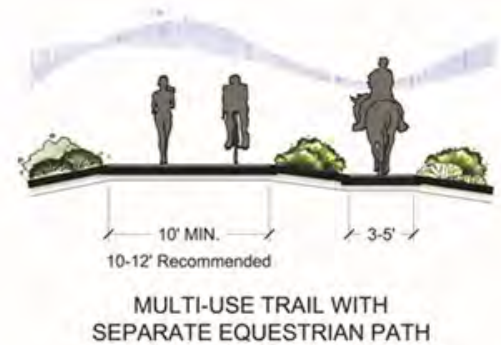
## WALKING PATH

Paved hard surface path usually 8 feet-wide but a minimum of 6 feet- wide. These types of trails/paths can be located in parks, used as trail/sidewalk when there is a separate bike lane in the roadway, or used just as trails with a shared use.



## EQUESTRIAN TRAILS

Dirt or stabilized dirt is a preferred surface. The equestrian trail should be at least three to six feet away from a hard surface trail for bikes and pedestrians and at least 5-feet wide tread for horses. Vertical clearance for equestrians should be at least ten feet, with a horizontal clearance of at least five feet.



## CROSS-COUNTRY SKI TRAILS

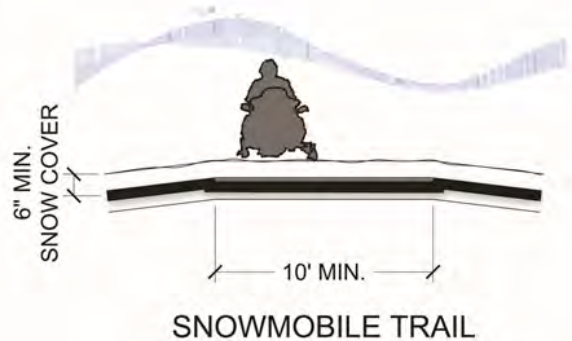
Many multi-use trails used for bicycling, walking, and horseback riding during warm months are ideal for cross-country skiing during winter months. The only requirement is at least six inches of snow.



# Recreation Classification System

## SNOWMOBILE TRAILS

Multi-use trails can be designated snowmobile trails with as little as six inches of snow, without causing damage to the trails. Snowmobiles can damage the trails if they do not have enough snow, so signage should advise snowmobilers of the required snow depth.



## TRAILHEADS

Trailheads are considered staging areas along a trail often accompanied by various public facilities such as parking areas, restroom, directional and information signs, benches, and picnic tables. Trailheads are an important link to trails as they provide areas for walkers and bikers to park, enter and exit the trail system, rest, picnic, and further enjoy the trail system.

## ATV/OTHER TRAILS

Development of ATV, mountain bike and other types of trails are all important to give a full rounded experience to a number of diverse users.

## Trail Systems

### COMMUNITY

Trails within the community that link areas, such as schools, parks, churches, commercial and historical areas, and access points to regional and state trails. These can include sidewalks, roadways, and designated multi-use trails

### REGIONAL

Trails that connect from community to community.

### HISTORIC

Trails designated as historical areas, i.e. Old Western Trail or the California-Oregon Trail.



# Parks & Trails Level of Service and Analysis

Smithfield City has a number of other recreation facilities which are not represented in the Parks and Trails Master Plan. These facilities have not been evaluated or inventoried as part of the level of service (LOS) for this document. These facilities include the Golf Course, Civic Center, Youth Center, and the Rec Center housed within the Sky View High School. All of these facilities offer recreation opportunities for the residents of the Smithfield but will not be included in the LOS at this time.

## Park and Trail Level of Service

An analysis of the current level of service looks at existing acreages of park land, types of facilities within the parks and miles of trail. As the community grows, more parks and trails are needed to provide the diversity and quantity of facilities desired by residents. In order to serve residents at the current level into the future, when new parks are planned and developed they should include Neighborhood Parks that are generally of a medium size (2 to 8 acres). If desired additional community parks could be developed to accommodate the preferred sports fields and leisure activities wanted by the residents. The city will need to continue

to build and develop trails to maintain the LOS and to allow for safe alternative transportation opportunities and walkable accesses to parks.

The LOS is based on the city's intent to provide continuing recreation opportunities in the form of well-maintained and strategically placed neighborhood and community parks and trails. Reasonable walkable access to the parks would be 1/2 mile for neighborhood parks and 3/4 mile for community parks. Figure 1: Walkable Park Access indicates the current walkable access for all existing parks. However, only the neighborhood and community parks will be considered in the LOS and the determination of future needs. A larger version of this map is included as Attachment 4.

Open space is not included in the LOS for the Parks and Trails Master Plan. The city should however, continue to allow open space dedications that are usable and include sensitive lands such as wetlands, riparian areas, steep slopes and rock outcrops, and other lands which have value visually or can be accessed by trails to help maintain the rural aspects of the city.



# Parks & Trails Level of Service and Analysis

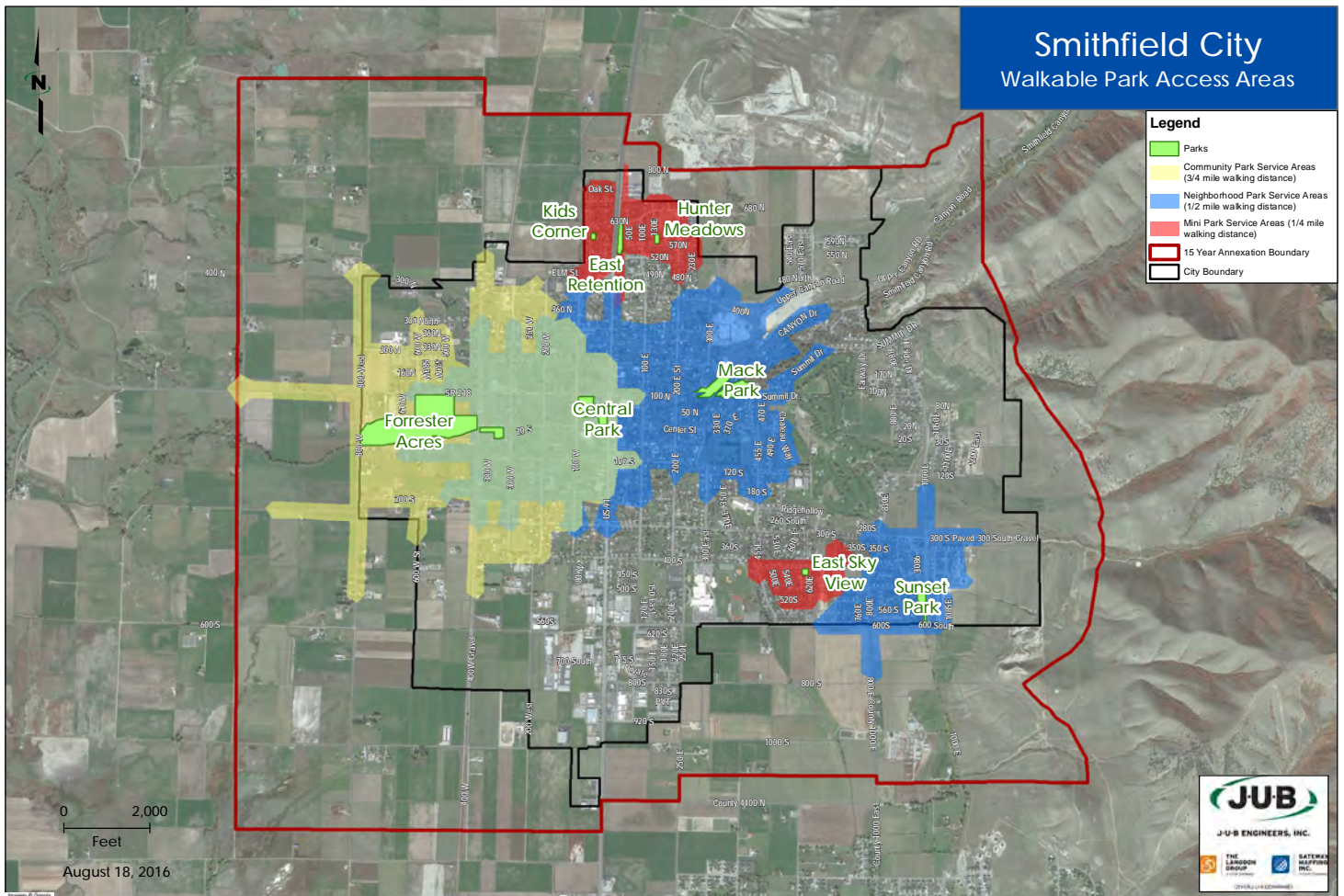


Figure 1: Walkable Park Access Areas

# Parks & Trails Level of Service and Analysis

Park Name	Total Acreage	Developed Acreage	Undeveloped	Detention	Approx. Location	Description
East Sky View	.6	.6	-	.6	620 East 420 South	Mini-Park Not included in the LOS
Hunter Meadows	.6	.6	-	.6	570 North 130 East	Mini-Park Not included in the LOS
Kids' Corner	.6	.6	-	.6	Wasatch and Maple	Mini-Park Not included in the LOS
East Retention Park	1.8	1.8	-	1.8	630 North Main	Mini-Park Not included in the LOS
Central Park	8	6.3	1.7	-	50 West 100 North	Neighborhood
Forrester Acres	48	44	4	1.5	450 West 100 North	Community
Heritage Park	2.5	2.5	-	-	350/360 West Center	Neighborhood
Mack Park	6.6	4.8	1.8	-	50 North 300 East	Neighborhood
Sunset Park	2.6	2.6	-	2 underground	500 South 1000 East	Neighborhood
<b>Total Acreage</b>	<b>70.8</b>	<b>63.8</b>	<b>7.5</b>	<b>7.1</b>	<b>Total Park Acreage included in the LOS: 67.7 acres</b>	
<b>Total Park Acreage included in the LOS</b>	<b>67.7</b>	<b>60.2</b>	<b>7.5</b>	<b>5.1</b> Not included in LOS		

Trail Name	Total Miles	Use	Approximate Location	Description
Heritage Trail	2.9	Multi-use	Through the Parks and City	Regional
Nature Trail	.2	Multi-use	380 East Canyon	Community
Sunset Trail	.8	Multi-use	500 East to Center	Regional
<b>Total Trail Miles included in the LOS</b>	<b>3.9</b>			

# Parks & Trails Level of Service and Analysis

## Existing Park and Trail Inventory

An inventory was conducted by city staff to determine the type, quantity, and quality of recreation facilities and opportunities that are currently available in Smithfield City. The city provided a list of all the parks and trails and the amenities found in each (see GIS database) the quantity and condition of each amenity was assessed. The inventory data was entered into the GIS database and is now spatially linked to each park and trail on the map, and is available for recall and updating whenever changes are made. It provides an accurate and current “picture” of the amenities found at each park and trail and their current condition. For the results of the inventory, please see Attachment 1: Existing and Future Parks, Attachment 2: Existing and Future Trails, and Attachment 3: Existing Parks and Trails Inventory to view the locations and amenities of the parks and trails. These attachments will give an inventory and condition of all the amenities in each park and trail as well as the future needs for each. This information is also available within the GIS database tables associated with the parks and

trails maps. The GIS database tables allow for easy hands on electronic access for the staff as well as the ability to view and update the amenities and condition while in the field.

In general, the parks and trails are in fair to good condition. There are two areas of concern that have been highlighted by this inventory and analysis. They include 1) a need to rebuild/ remodel many of the restroom facilities in a number of the parks and 2) a need to replace playground surface areas in all parks. Current playground surfaces have sand which can harden and put the children at higher risk of fall injuries according to the city’s insurance agency. The Parks Department spends many hours each week raking the sand surfaces to help prevent injury. Cost, time and injury risks can be reduced by making strides to replace the sand with other types of surfaces. An additional consideration is that currently residents and children with ADA accessibility limitations cannot access any of the playground areas because of the current type of surface. New surfaces can be implemented in some of the parks to allow for ADA access.



# Parks & Trails Level of Service and Analysis

## Recommendations to System

### Proposed Active Park Land

The city's Existing and Future Parks and Trails map indicates *approximate locations* for future opportunities for new park and trail facilities. The future planned parks are represented as a clouds and do not indicate a zone change for the property in which the park cloud may be located.

The city has planned four new neighborhood parks as the population increases. With new growth the city will be able to reference the future parks and trails maps from this plan as well as the general plan to guide and encourage developers to participate in the development of new park and trail facilities through impact fees, land donations, or actual park development.

Smithfield City could choose to incorporate the planned parks through development agreements, development negotiations, or by purchasing the property outright. The planned parks have been located in areas of the community that have growth potential and are not now serviced by a park facility or are not within the designated walking distance. See Attachment 1: Existing and Future Parks Map for general areas where future parks could be located.

### Proposed Trails

Future trails within Smithfield City face a unique situation due to the compactness of the development throughout the community. There are very limited areas for trails to “meander” through the community, however, it is still possible to allow for trails east and west of the golf course and along Canyon Road and in new developments within Smithfield City. The Advisory Committee identified

the options for trails that have been proposed in the General Plan on the Future Land Use Map. Some of the trails indicated on the map are a combination of trail/sidewalk that are next to existing roads and within city rights-of-way. The Committee made every effort to form trail system connectivity to other communities.

The General Plan indicated future multi-use trails, sidewalk trails, and and equestrian trail that could be designated. The cost to build an 8 – 10-foot-wide asphalt trail in 2016 dollars is estimated at \$38 per liner foot (this cost does not include the purchase of right-of-way). See Attachment 2: Existing and Future Trails Map for future planned trails.

## Other Nearby Recreational Opportunities

- » **Logan Skate Park:** located at 500 South 595 West, Logan.
- » **Willow Park Zoo:** located at 419 West 700 South, Logan. The Zoo provides a sanctuary for 11 mammal species, a mixture of reptiles and fish, and over 100 bird species.
- » **Forest Service Trails:** trails located within the Forest Service area are available for public uses.
- » **Hyrum State Park:** boating, year-round fishing, waterskiing, camping and swimming on a 450-acre lake.
- » **Hardware Ranch:** (winter wildlife feeding ranch) up Blacksmith Fork Canyon.
- » **American West Heritage Center:** 160-acre living history center with historical and animal exhibits, and fall harvest festival. Located 6 miles south of Logan on U.S. Highway 89/91.

# Implementation

The strategy plan below outlines specific goals, action items, and timing. Each of the goals in the strategy plan are aimed at accomplishing the overarching Parks and Trails Master Plan goals and objectives as detailed in Chapter 1.

The strategy plan reflects the priorities set forth by the Advisory Committee, Planning Commission, and City Council. One of the key goals listed in this plan is that priorities for parks, facilities, trails, and open space may be reviewed regularly to insure the goals are in line with the current objectives of the community. Additionally, since the priorities of planned goals will shift over time, and new goals may need to be set, the plan itself should experience a comprehensive review and update every five years.

## Strategy Plan

### Planning Policies/Goals

1. Adopt the Parks and Trails Master Plan.
2. As the population increases, adopt a citywide level of service goal by resolution.
3. Analyze the park and trail needs as population increases, and analyze the needed impact fees, as a means of funding future improvements.
4. Adopt standards of development for all parks and trails by ordinance.
5. Perform a comprehensive update to the Parks and Trails Master Plan every five years.
6. Explore possible opportunities for a land preservation program such as transfer/purchase of development rights, conservation easements, and agri-tourism.

PLANNING ACTIONS	TIMING	RESPONSIBILITY
<p><b>Action A: Adopt the Parks and Trails Master Plan.</b></p> <p>A-1 Schedule public hearing.</p> <p>A-2 Take public comments and make recommendations.</p> <p>A-3 Adopt new Parks and Trails Master Plan.</p>	0-6 months	City staff and City Council
<p><b>Action B: Annual review of the community’s needs and priorities for parks, trails, and open space projects annually.</b></p> <p>B-1 Schedule a retreat with the City Council to review the current and future needs of the parks and trails. Use this time to identify and budget for these items.</p> <p>B-2 Annually review budget and needs in public meetings.</p> <p>B-3 Take public comments and make recommendations.</p> <p>B-4 Adopt new priorities as necessary.</p>	Annually	Planning Commission/ City Council

# Implementation

PLANNING ACTIONS	TIMING	RESPONSIBILITY
<p><b>Action C: Adopt standards of development for all parks, trails, and open space by ordinance.</b></p> <p>C-1 Specify development standards and requirements for all future parks, trails, and open space developed within the community.</p> <p>C-2 Document standards and requirements by ordinance.</p>	0-1 year	Public Works, City Engineer, Planning Commission, City Council and advisory staff
<p><b>Action D: Perform a comprehensive update to the Parks and Trails Master Plan at least every 5 years.</b></p> <p>D-1 Review results of annual reviews and/or amendments to the plan and determine which goals and plan aspects are in need of update.</p> <p>D-2 Submit a report on the status and needed updates of the plan.</p> <p>D-3 Hold a public hearing for comments about the plan.</p> <p>D-4 Assign or commission the work of updating the plan.</p>	Every 5 years/as needed	City staff, Planning Commission and City Council
<p><b>Action E: Explore and implement a land preservation program such as transfer/purchase of development rights, conservation easements, and agri-tourism and reserve or preserve overlays, to help preserve the agricultural and rural character.</b></p> <p>E-1 Invite consultants to present concepts at City Council meetings.</p> <p>E-2 Hold public hearings for comments about the programs.</p> <p>E-3 Decide upon a program that suits the city.</p> <p>E-4 Update the zoning and subdivision ordinances to implement the land preservation program.</p>	0-1 year	City Staff, Planning Commission and City Council

# Implementation

## Project Policies/Goals

1. Complete needed improvements to existing parks as outlined in this plan using funding opportunities available each year.
2. Identify any additional areas where future parks and trails may need to be as land is annexed into the city.
3. Take opportunities to acquire land when it is available at a reasonable price.
4. Explore the possibilities for dedication and/or purchasing of future parks and trails land as new development occurs. Contact land owners, developers, and private sources for gifts, dedications, or trades.
5. Work with nearby communities to develop trails, trail heads and/or possible areas where parking may be available to access the trails.
6. Work in conjunction with other communities, County, and private land owners to acquire land and develop maps and guidelines for facilities and use.

PROJECT ACTIONS	TIMING	RESPONSIBILITY
<p><b>Action A: Complete needed improvements to existing parks as outlined in this plan.</b></p> <p>A-1 Develop concept and master plans and cost estimates for improvement projects.</p> <p>A-2 Review and amend the recommended improvements for the parks and trails as listed in this plan.</p> <p>A-3 Submit recommendation to the City Council.</p> <p>A-4 Approve plan and budget for park and trail improvements.</p> <p>A-5 As improvements are made update the level of service.</p>	0-2 years	City Staff, Planning Commission and City Council
<p><b>Action B: Take opportunities to acquire land when it is available at a reasonable price.</b></p> <p>B-1 Explore the possibilities for dedication and/or purchasing of future parks/open space and trails before land prices preclude development.</p> <p>B-2 Contact land owners, developers, and private sources for gifts, dedications, or trades.</p>	0-5 years	City Staff and City Council



# Implementation

## Funding and Budget Policies/Goals

1. Prepare an annual budget to address priority park projects in the city’s Capital Improvement Plan.
2. Obtain funding from as many outside sources as possible.

FUNDING & BUDGET ACTIONS	TIMING	RESPONSIBILITY
<p><b>Action A: Obtain funding from as many outside sources as possible.</b></p> <p>A-1 Identify funding possibilities from federal, state, regional, and local sources.</p> <p>A-2 Apply for grants for specific parks, trails, and open space projects.</p> <p>A-3 Create and cultivate good relationships with important funding sources.</p> <p>A-4 Investigate opportunities for private funding.</p> <p>A-5 Contact land owners and private sources for gifts, donations, &amp; dedications.</p>	0-5 years	City Staff and Public Works
<p><b>Action B: Prepare annual budget to address priority projects.</b></p> <p>B-1 Hold a work meeting to review the needs, priorities, goals, and budget for parks and trails projects.</p> <p>B-2 Prepare/revise a strategic plan for budgeting and accomplishing the goals of this plan during the next 5 years.</p> <p>B-3 Adopt a budget which includes accomplishing the identified goals for that year</p>	Annually	City Council



# Funding Options

## Parks and Recreation

### Private and Public Partnerships

The Parks and Recreation Department and a private developer may often cooperate on a facility that serves the public, yet is also attractive to an entrepreneur. These partnerships can be effective funding methods for special use sports facilities like baseball or soccer complexes. However, they generally are not feasible when the objective is to develop neighborhood and community parks that provide facilities such as playgrounds, informal playing fields, and other recreational opportunities that are generally available to the public free of charge. A recreation or swimming complex is also potentially attractive as a private/public partnership.

*Private Fundraising:* While not addressed as a specific strategy for individual recreation facilities, it is not uncommon that public monies be leveraged with private donations.

*Service Organizations:* Many service organizations and corporations have funds available for park and recreation facilities.

### Joint Development

Joint development opportunities may also occur between municipalities, nearby communities and counties, and among agencies or departments within a municipality or county. These opportunities should be explored whenever possible in order to maximize recreation opportunities and minimize costs. In order to make these kinds of opportunities happen there must be on-going and constant communication between people, governments, businesses interests and others.

## Development Contributions

Development contributions are a means for requiring, as a condition of development approval, a builder or developer to give something to the city for the development of public facilities. Exactions can range from impact fees to land dedications for public improvements.

*Park and Trail Impact Fees:* Impact fees are especially useful in areas of rapid growth, and given the large amount of land that remains undeveloped, an impact fee is warranted. The city should ensure that their current impact fees are current with the new state laws.

*Dedications:* The dedication of land for parks has long been an accepted development requirement and is another valuable tool for implementing park development. The city can require the dedication or, if larger-sized parcels are desired, can offer development “bonuses” such as increased density of development in exchange for the dedication of land to the city for parks. In some cases, the developer may also be responsible for park improvements, which may also be maintained by a Homeowner’s Association. In such cases, it is important to make a determination as to whether the parkland is private or public, and that the desired and appropriate facilities are provided.

## City Funding - General Fund or Bonding and Special Taxes

The city can fund parks directly from its general fund or can bond for park development and spread the cost over many years. Due to the amounts needed to fund parks development, bonding is a reasonable approach. Repayment of the bonds

# Funding Options

comes from general city revenue sources such as property and sales tax, or other earmarked tax revenue. Tax revenue collected for special purposes may be allocated to park development.

## RAPZ Tax

Cache County has RAPZ Taxes available every year for recreation projects within the county. The city could use these taxes to match other funds to develop many of the projects listed in the plan. Because the RAPZ funds are limited, the city may need to take a phased approach to build a larger project.

## User Fees

Many communities charge leagues and sports organizations to use facilities to recover some of the costs of upkeep and maintenance. A similar situation occurs with concessions. As it develops facilities, Smithfield should continue to charge user fees to recover at least some of the costs of maintenance and operations for recreation facilities, concessions, park sports facilities, and future cultural and recreational opportunities.

## State and Federal Programs

The Land and Water Conservation Fund is made available to states and in Utah is administered by the Utah State Division of Parks and Recreation. Funds are matched with local funds for acquisition of park and recreation lands, redevelopment of older recreation facilities, trails, improvements to accessibility, and other recreation programs and facilities that provide close-to-home recreation opportunities for youth, adults, senior citizens, and persons with physical and mental disabilities.

The Utah Outdoor Recreation Grant is a fairly new grant program that is sponsored by the Governor's Office of Economic Development. The grant is funded on a year-by-year basis through the State Legislature and can be used for outdoor recreation elements and trails.

## Trails

### Federal Funding

The funding programs created under the New Transportation Act of 2012 (reauthorized in 2016), include walking and bicycle facilities as eligible activities. Most federally-funded projects and activities require a state or local match. Federal sources may be available to Smithfield City either through the Utah Department of Transportation or Bear River Association of Governments.

*Transportation Alternatives Program (TAP):*  
Funds may be used for construction, planning, and design of on-road and off-road trail facilities. They may be used for pedestrians, bicyclists, and other non-motorized forms of transportation, including sidewalks, bicycle infrastructure, pedestrian and bicycle signals, traffic calming techniques, lighting and other safety-related infrastructure that will provide safe routes.

### State Funding Opportunities

The State of Utah also has programs in place that can provide funding for bicycle and pedestrian facilities and programs. These funds are through the Utah State Parks Non-Motorized Trail Grants which are made available every year for trail projects.

---

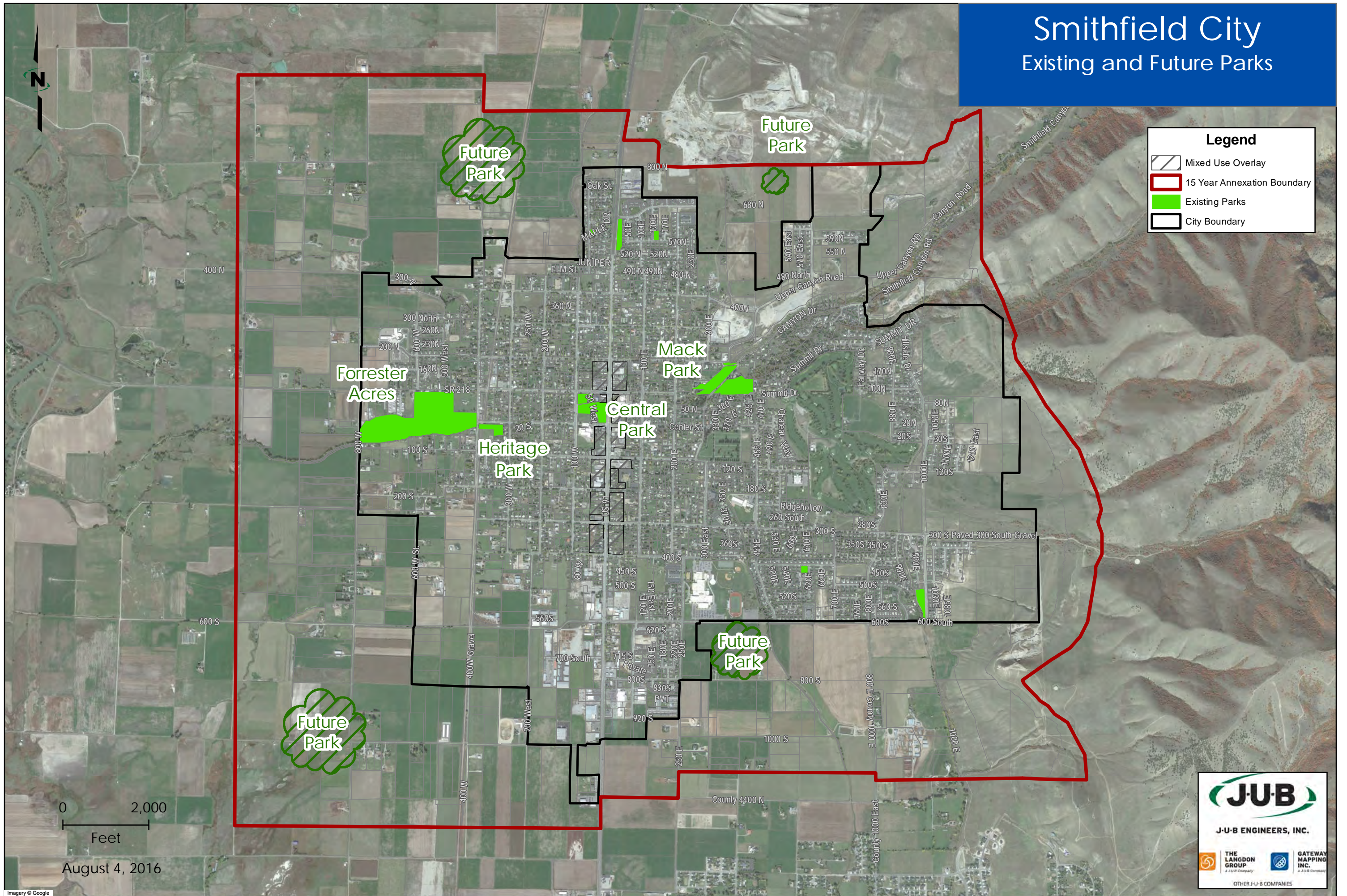
# Attachment 1

## Existing and Future Parks Map

---

# Smithfield City

## Existing and Future Parks



**Legend**

- Mixed Use Overlay
- 15 Year Annexation Boundary
- Existing Parks
- City Boundary

0 2,000  
Feet

August 4, 2016

**JUB**  
J-U-B ENGINEERS, INC.

THE LANGDON GROUP  
GATEWAY MAPPING INC.

OTHER J-U-B COMPANIES

A decorative horizontal band with a diagonal hatching pattern, consisting of thin, parallel lines slanted from the top-left to the bottom-right.

# Attachment 2

## Existing and Future Trails Map

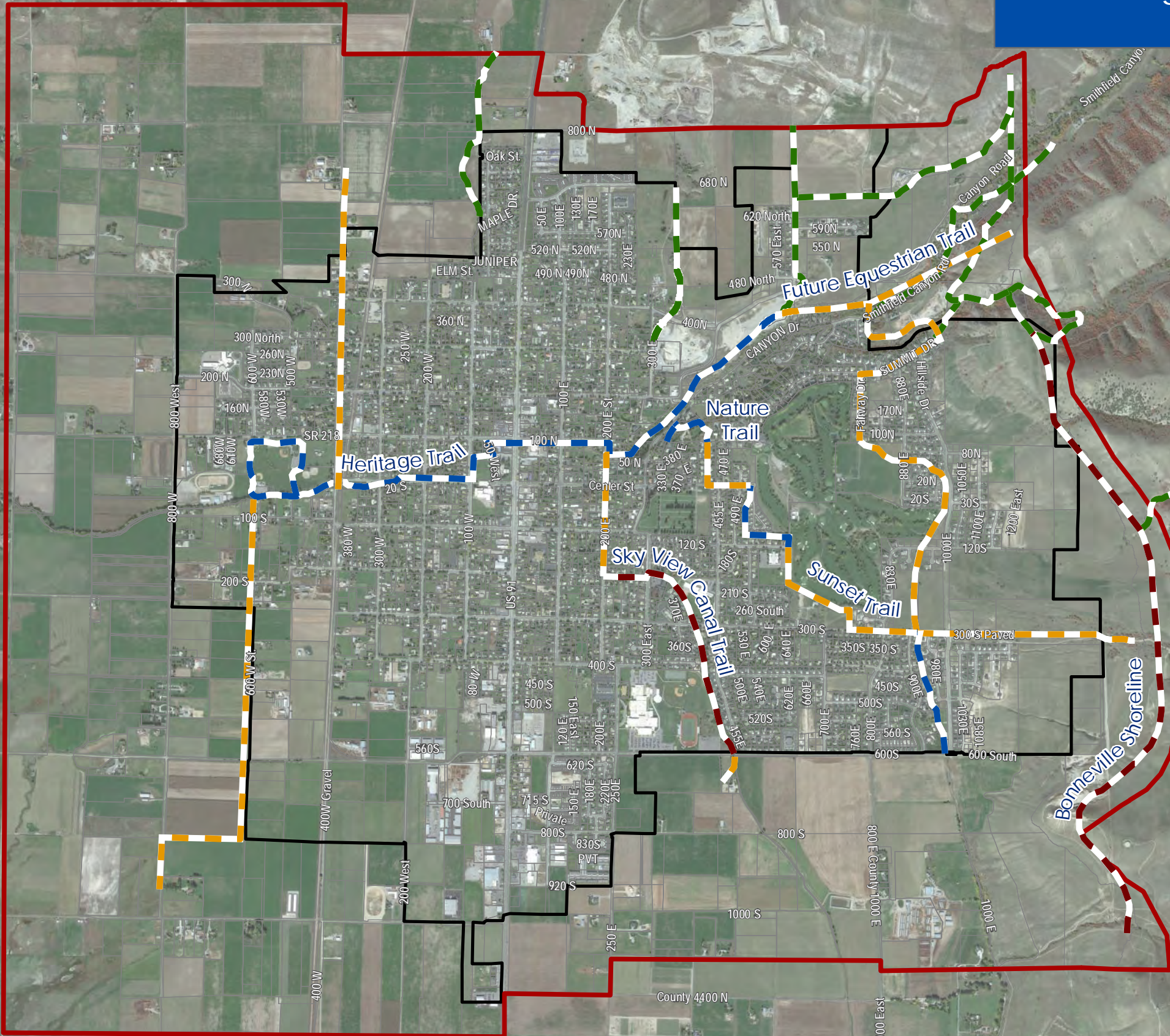
# Smithfield City

## Existing and Future Trails

**Legend**

**Trails**

- Existing
- Existing Canyon
- Future
- Non City-Owned
- 15 Year Annexation Boundary
- City Boundary



October 25, 2016

**JUB**

J-U-B ENGINEERS, INC.

THE LANGDON GROUP  
A JUB Company

GATEWAY MAPPING INC.  
A JUB Company

OTHER J-U-B COMPANIES



# Attachment 3

Inventory of Existing Parks and Trails



Condition Classifications Information 1- Bad 2- Fair 3 Good	Classification	Address	Park Use	Year Developed	Acreage			
					Developed Acres	Undeveloped Acres	Detention Basin Acres	Total Acres
<b>Mack Park</b>	Neighborhood	50 N. 300 E.	Pic, Volleyball	1934	4.8	1.8		6.6
<b>Central Park</b>	Neighborhood	50 W. 100 N.	Pic, Sports	1920	6.3	1.7		8
<b>Heritage Park</b>	Neighborhood	350/360 W. Center	Weddings, pic.	2003-2006	2.5			
<b>Forrester Acres</b>	Community	450 W. 100 N.	Sports, Rec, Pic.	1953 to 2016	42.5	4	1.5	48
<b>Sunset Park</b>	Neighborhood	500 S. 1000 E.	Play ground, pic.	2015	2.6		2	2.6
<b>East Sky View</b>	Mini-park	620 E. 420 S.	Play ground, pic.	2009	0.6	Under Ground .6		0.6
<b>Hunter Meadows</b>	Mini-park	570 N. 130 E.	Play ground, pic.	2010	0.6			0.6
<b>East Retention Park</b>	Mini-park	630 N. Main	Recreation	2011	1.8		1.8	1.8
<b>Kids Corner</b>	Mini-park	Wasatch - Maple	Play ground, pic.	1975	0.6			0.6
<b>Heritage Trail</b>	Regional Trail	Through Town	Walking, biking	2001				
<b>Nature Trail</b>	Community	380 E. Canyon	Walking	2005				
<b>Sunset Trail</b>	Regional Trail	500 E. Center	Walking	2004				
<b>Civic Center</b>	Indoor Facility							
<b>Youth Center</b>	Indoor Facility							
<b>Rec Center</b>	Indoor Facility							

Condition Classifications Information 1- Bad 2- Fair 3 Good	Baseball Field		Baseball Field Lights		Softball Field		Softball Field Lights		Basketball Court	
	Count	Condition	Count	Condition	Count	Condition	Count	Condition	Count	Condition
Mack Park										
Central Park										
Heritage Park										
Forrester Acres	2	3	1	3	2	3	2	3		
Sunset Park										
East Sky View										
Hunter Meadows										
East Retention Park										
Kids Corner									1	3
Heritage Trail										
Nature Trail										
Sunset Trail										
Civic Center										
Youth Center										
Rec Center										

Condition Classifications Information 1- Bad 2- Fair 3 Good	Basketball Court Lights		BBQ		Bench		Bleachers (movable)		Bleachers (fixed)		Pavilion, Small (1 Table)	
	Count	Condition	Count	Condition	Count	Condition	Count	Condition	Count	Condition	Count	Condition
Mack Park					12	3						
Central Park			3	3	10	3	2	3				
Heritage Park					7	3						
Forrester Acres					9	3	18	3	1	3	2	3
Sunset Park					3	3						
East Sky View					2	3						
Hunter Meadows					2	3						
East Retention Park												
Kids Corner					2	3						
Heritage Trail												
Nature Trail												
Sunset Trail												
Civic Center												
Youth Center												
Rec Center												

Condition Classifications Information 1- Bad 2- Fair 3 Good	Pavilion, Medium (2 - 9 Tables)		Pavilion, Large (10 Tables +)		Concession Stand(s)		Designated Football Field		Designated Football Field Lights		Designated Soccer Field	
	Count	Condition	Count	Condition	Count	Condition	Count	Condition	Count	Condition	Count	Condition
Mack Park			2	3								
Central Park			1	3								
Heritage Park												
Forrester Acres					4	3	1	3			1	3
Sunset Park												
East Sky View	1	3										
Hunter Meadows	1	3										
East Retention Park												
Kids Corner												
Heritage Trail												
Nature Trail												
Sunset Trail												
Civic Center												
Youth Center												
Rec Center												

Condition Classifications Information 1- Bad 2- Fair 3 Good	Designated Soccer Field Lights		Drinking Fountain		Fencing		Fire Pit or Fireplace		Flag Pole		Frisbee Golf Course	
	Count	Condition	Count	Condition	Type	Condition	Count	Condition	Count	Condition	Count	Condition
Mack Park			2	2	Wood Plan	3	3	3				
Central Park					Chain Link	3			1	3		
Heritage Park					Vinyl	3						
Forrester Acres			5	3	Chain Link	3			1	3		
Sunset Park												
East Sky View			1	3	Vinyl	3						
Hunter Meadows			1	3	Vinyl	3						
East Retention Park												
Kids Corner					Chain/Vinyl	3						
Heritage Trail												
Nature Trail												
Sunset Trail					Chain/Vinyl	3						
Civic Center												
Youth Center												
Rec Center												

Condition Classifications Information 1- Bad 2- Fair 3 Good	Community Garden		Specialized Garden		Historical Marker		Horseshoe Pit		Information Kiosk		Interactive Fountain	
	Count	Condition	Count	Condition	Count	Condition	Count	Condition	Count	Condition	Count	Condition
Mack Park							4	3				
Central Park					3	3	4	3	1	3		
Heritage Park					1	3						
Forrester Acres												
Sunset Park												
East Sky View												
Hunter Meadows												
East Retention Park												
Kids Corner												
Heritage Trail												
Nature Trail					1	3						
Sunset Trail												
Civic Center												
Youth Center												
Rec Center												

Condition Classifications Information 1- Bad 2- Fair 3 Good	Irrigation System				Meeting Room		Equipment Storage Room		Multi-Use Field			Multi-Use Field Lights	
	(Yes/No)	(Automatic/ Manual)	Condition	Age	Count	Condition	Count	Condition	Count	Condition	Acres	Count	Condition
Mack Park	Y	A	3	40			1	3					
Central Park	Y	A	3	40					1	3			
Heritage Park	Y	A	3	13									
Forrester Acres	Y	A	3	30yr.to current			8	3					
Sunset Park	Y	A	3	1					1	3	2.6		
East Sky View	Y	A	3	7									
Hunter Meadows	Y	A	3	6									
East Retention Park													
Kids Corner	Y	A	3	41									
Heritage Trail	Y	A	3	15									
Nature Trail	Y	A	3	11									
Sunset Trail	Y	A	3	12									
Civic Center													
Youth Center													
Rec Center													

Condition Classifications Information 1- Bad 2- Fair 3 Good	Need for Tree Replacement Schedule	Park Sign		On-Street Parking (number of stalls)		Off-Street Parking (number of stalls)		Picnic Table		Large Playground (>25 kids)		Small Playground (<25 kids)	
		Count	Condition	Count	Pavement Condition	Count	Condition	Count	Condition	Count	Condition	Count	Condition
Mack Park	Y	3	3			83	3	30	3	2	3		
Central Park	Y	1	3	22	3	44	3	15	3	1	3		
Heritage Park	Y			6	3	7	3	1	3				
Forrester Acres	Y	2	2	75	3	220	2	2	2	1	3		
Sunset Park	Y			25	3					1	3		
East Sky View	Y	1	3	12	3			8	3	1	3		
Hunter Meadows	Y			12	3			8	3	1	3		
East Retention Park													
Kids Corner	Y	1	3	15	3					1	3		
Heritage Trail	Y	15	3										
Nature Trail	Y	1	3			6	3						
Sunset Trail	Y												
Civic Center													
Youth Center													
Rec Center													



Condition Classifications Information 1- Bad 2- Fair 3 Good	Portable Soccer Goals for Temporary Fields		Portable T-Ball for Temporary Fields		Restrooms		Scorekeeper's Tower		Skate Park		Specialized Bowery i.e. gazebo, bandstand	
	Count	Condition	Count	Condition	Count	Condition	Count	Condition	Count	Condition	Count	Condition
Mack Park					1	2					1	3
Central Park	4	3			1	1	1	3				
Heritage Park											1	3
Forrester Acres	8	3	2	3	4	1	6	3				
Sunset Park												
East Sky View											1	3
Hunter Meadows											1	3
East Retention Park												
Kids Corner												
Heritage Trail												
Nature Trail												
Sunset Trail												
Civic Center												
Youth Center												
Rec Center												

Condition Classifications Information 1- Bad 2- Fair 3 Good	Splash Pad		Swimming Pool		Swings		Tennis Court		Tennis Court Lights		Trail Head		Trash Receptacle	
	Count	Condition	Count	Condition	Count	Condition	Count	Condition	Count	Condition	Count	Condition	Count	Condition
Mack Park					2	3					1	3	16	3
Central Park											2	3	7	3
Heritage Park											1	3	1	3
Forrester Acres													39	3
Sunset Park													1	3
East Sky View					4	3							2	3
Hunter Meadows													2	3
East Retention Park														
Kids Corner					2	3							1	3
Heritage Trail														
Nature Trail														
Sunset Trail														
Civic Center														
Youth Center														
Rec Center														

Condition Classifications Information 1- Bad 2- Fair 3 Good	Volleyball Court (paved)		Volleyball Court (sand)		Volleyball Court Lights		Walking Paths and Trails Within the Park		Youth Baseball Field		Youth Field Lights	
	Count	Condition	Count	Condition	Count	Condition	Length	Condition	Count	Condition	Count	Condition
Mack Park			1	3			1600'	3				
Central Park			1	3			350'	3				
Heritage Park							1800'	3				
Forrester Acres							4300'	3				
Sunset Park							2550	3				
East Sky View												
Hunter Meadows												
East Retention Park												
Kids Corner												
Heritage Trail							14,850'	3				
Nature Trail							1150'	3				
Sunset Trail							4250'	2				
Civic Center												
Youth Center												
Rec Center												

Condition Classifications Information 1- Bad 2- Fair 3 Good	Other (specify)		Other (specify)		Other (specify)	
	Amenity Name/Type	Condition	Amenity Name/Type	Condition	Amenity Name/Type	Condition
Mack Park	River	3	Preservation Board	3		
Central Park	River - Flower Beds	3	Preservation Board	3	Christmas Lights	3
Heritage Park	Historical Cabin	2	River Bridge	3	River	3
Forrester Acres	Horse Arena & Track	3	Batting Cages, Dug out, Practice Pitcher	3	Memorial Monuments	3
Sunset Park						
East Sky View						
Hunter Meadows						
East Retention Park						
Kids Corner						
Heritage Trail						
Nature Trail	Memorial Trees	3	River Bridge	3		
Sunset Trail						
Civic Center						
Youth Center						
Rec Center						

**Park Name: Central Park** **Park Address: 50 West 100 North**

**Size: 8 Acres** **Classification: Neighborhood**  
**Detention: None** **Over All Condition: Good** **Year Built: 1920**

**Amenities**

Item	Count	Condition
BBQ	3	Fair
Bench	10	Good
Bleachers	2	Fair
Pavilion Large	1	Bad
Fence	Chain Link	Fair
Flag Pole	1	Fair
Historical Marker	3	Good
Horseshoe Pit	4	Fair
Information Kiosk	1	Good
Irrigation System	40 Years old	Fair
Multi-Use Field	1	Good
Park Sign	1	Good
On-Street Parking	22	Good
Off-Street Parking	44	Good
Picnic Tables	30	Good
Large Playground	1	Fair
Portable Soccer Goals	4	Good
Restrooms	1	Bad
Scorekeeper's Tower	1	Fair
Trail Head	1	Good
Trash Receptacle	7	Fair
Volleyball Court	1	Fair
Walking Path	350 Feet	Good
River and Flower Beds	Specialty Item	Good
Christmas Lighting	Specialty Item	Good

**Future Needs**

Update or rebuild the restrooms  
 Cement border around the volleyball area  
 Sprinkler system on the north side  
 Splash Pad  
 Skate Park  
 Redo curbing and sidewalk  
 Update pavilion  
 Purchase new picnic tables  
 Plant additional trees  
 New park sign  
 Replace and enlarge river bridge  
 Resurface playgrounds  
 Parking lot update  
 Update bleachers  
 Update trash receptacles and lids  
 Update drinking fountains  
 Information board

<b>Park Name: Forrester Acres</b>		<b>Park Address: 450 West 100 North</b>	
<b>Size: 48 Acres</b>		<b>Classification: Community</b>	
<b>Detention: Yes 1.5 Acres</b>		<b>Over All Condition: Good</b>	
<b>Year Built: 1953- 2016</b>			
<b>Amenities</b>			
Item	Count	Condition	
Baseball Field	2	Good	
Baseball Field Lights	1	Good	
Softball Field Lights	2	Fair	
Bench	9	Good	
Bleachers Movable	18	Good	
Bleachers Fixed	1	Fair	
Pavilion Small	2	Fair	
Concession Stands	4	Bad (Except for New Blue Socks)	
Football Field	1	Good	
Soccer Field Designated	1	Good	
Drinking Fountains	5	Fair	
Fence	Chain Link	Bad to Fair Needs work	
Flag Pole	1	Good	
Irrigation System	30 or Less Years Old	Good	
Equipment Room	8	Fair	
Park Sign	2	Fair	
On-Street Parking	75	Good	
Off-Street Parking	220	Fair	
Picnic Tables	2	Bad	
Large Playground	1	Fair	
Portable Soccer Goals	8	Good	
Portable T-Ball	2	Good	
Restrooms	4	Bad	
Scorekeeper's Tower	6	Good	
Trash Receptacle	39	Fair	
Walking Path	.81 Mile	Good	
Horse Arena and Track		Good	
Batting Cages		Good	
Memorial Monument		Good	
<b>Future Needs</b>			
Update or rebuild the 3 restrooms Build pavilions and add tables New park signs Modify sprinkling system Modify culinary connections Replace homerun fence line throughout the park Update backstop behind Blue Socks Add new parking lot Plant additional trees Add additional bike racks Expand the park in undeveloped area Resurface playgrounds Install entrance gate, park sign, information board at the horse arena Update trash receptacles and lids Information board			

<b>Park Name: Heritage Park</b>		<b>Park Address: 350 West Center Street</b>	
<b>Size: 2 Acres</b>		<b>Classification: Neighborhood</b>	
<b>Detention: None</b>		<b>Over All Condition: Good</b>	
<b>Year Built:2003</b>			
<b>Amenities</b>			
<b>Item</b>	<b>Count</b>	<b>Condition</b>	
Bench	7	Good	
Fence	Vinyl Privacy	Good	
Historical Marker	1	Good	
Irrigation System	13 Years Old	Good	
Specialized Bowery	1	Good	
Off-Street Parking	7	Good	
Picnic Tables	1	Good	
Picnic Tables	1	Bad/Needs Updating	
Trail Head	1	Good	
Trash Receptacle	1	Fair	
Historical Cabin	1	Fair	
River Bridge	1	Good	
Walking Path	.34 mile	Good	
<b>Future Needs</b>			
Park Sign			
Purchase moveable Stage for City events			
Update Pavilion/bandstand			
Update trash receptacles and lids			

<b>Park Name: Mack Park</b>		<b>Park Address: 50 North 300 East</b>	
<b>Size: 6.6 Acres</b>		<b>Classification: Neighborhood</b>	
<b>Detention: None</b>			
<b>Amenities</b>			
<b>Item</b>	<b>Count</b>	<b>Condition</b>	
Bench	12	Good	
Pavilion Large	2	Fair	
Drinking Fountain	2	Fair	
Fencing	Wood Plank	Good	
Fire Pit	3	Fair	
Horseshoe Pit	4	Fair	
Irrigation System	40 years old	Good	
Equipment Storage Room	1	Good	
Park Sign	3	Good	
Off-Street Parking	83	Good	
Picnic Tables	30	Good for most/need replacement	
Large Playground	2	Fair	
Restrooms	1	Bad	
Swings	2	Good	
Trail Head	1	Good	
Trash Receptacle	16	Fair	
Volleyball Court Sand	1	Good	
Trail Bridge	1	Bad	
River through the park			
Walking Path in the Park	.3 mile	Good	
<b>Future Needs</b>			
Rebuild the bridge Remove large trees Develop area west of Mack Park Resurface playgrounds Update Restrooms Expand concrete around the pavilions Update Pavilions Update picnic tables and benches Add a welcome sign and information kiosk Add additional pavilion on the west end of the park Replace walking bridge Update trash receptacles and lids			



<b>Park Name: Sunset Park</b>		<b>Park Address: 500 South 1000 East</b>	
<b>Size: 2.6 Acres</b>		<b>Classification: Neighborhood</b>	
<b>Detention: Yes 2 Acres</b>		<b>Over All Condition: Good</b>	
<b>Year Built: 2015</b>			
<b>Amenities</b>			
<b>Item</b>	<b>Count</b>	<b>Condition</b>	
Bench	3	Good	
Irrigation System	1 Year Old	Good	
Multi-Use Field	1 - 2.6 Acres	Good	
On-Street Parking	25	Good	
Large Playground	1	Good	
Trash Receptacle	1	Good	
Walking Path	.48 Miles	Good	
<b>Future Needs</b>			
Build restrooms Build pavilion Purchase new picnic tables Plant additional trees Update trash receptacles and lids Resurface playgrounds Add swing sets			

<b>Trail Name: Heritage Trail</b>		<b>Trail Location: From Forrester Acres Park to Mack Park</b>	
<b>Length: 2.9 Miles</b>		<b>Classification: Regional</b>	
<b>Over All Condition: Good</b>		<b>Year Built:2001</b>	
<b>Amenities</b>			
<b>Item</b>	<b>Count</b>	<b>Condition</b>	
Irrigation System	15 Year Old	Good	
Trail Signs	15	Good	
Connects Four Parks			

<b>Trail Name: Nature Trail</b>		<b>Trail Location: 380 East Canyon</b>	
<b>Length: .2 Miles</b>		<b>Classification: Regional</b>	
<b>Use: Multi-use</b>		<b>Over All Condition: Good</b>	<b>Year Built: 2005</b>
<b>Amenities</b>			
<b>Item</b>	<b>Count</b>	<b>Condition</b>	
Irrigation System	11 Years Old	Good	
Trail Signs	1	Good	
Off-Street Parking	6	Good	
Memorial Trees	?	Good	
River Bridge	1	Good	
Historical Marker	1	Good	

<b>Trail Name: Sunset Trail</b>		<b>Trail Location: 380 East Canyon</b>	
<b>Length: .80 Mile</b>		<b>Classification: Regional</b>	
<b>Use: Multi-use</b>	<b>Over All Condition: Good</b>	<b>Year Built: 2004</b>	
<b>Amenities</b>			
Item	Count	Condition	
Fencing	Vinyl	Good	
Irrigation	12 Years old	Good	

## **Park Future Needs**

### **East Sky View Park**

Resurface playgrounds

Update pavilion

Update trash receptacles and lids

### **Kids Corner**

Resurface playgrounds

New basketball hoops

New picnic tables

Update trash receptacles and lids

### **Hunter Meadows**

Resurface playgrounds

Update pavilion

Park Sign

Update trash receptacles and lids

### **East Retention**

Add picnic tables, benches, and trash receptacles

Park sign

Plant trees

## **Trail Future Needs**

Standardized trail signs

Additional benches

Rebuild areas where narrow sidewalks are used as part of the trail system to a standardized wider asphalt trails



# Attachment 4

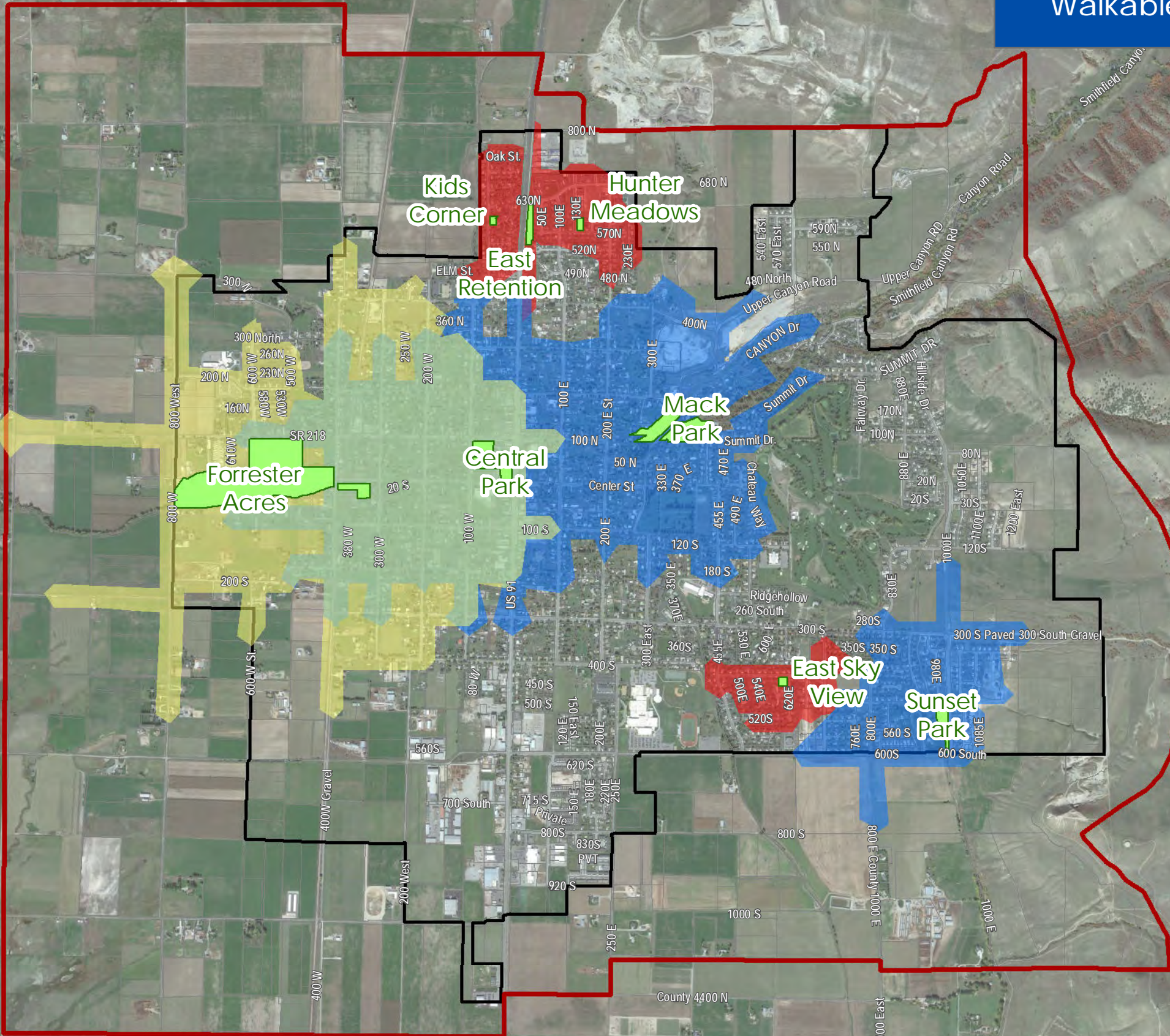
## Walkable Park Access Map

# Smithfield City

## Walkable Park Access Areas

**Legend**

- Parks
- Community Park Service Areas (3/4 mile walking distance)
- Neighborhood Park Service Areas (1/2 mile walking distance)
- Mini Park Service Areas (1/4 mile walking distance)
- 15 Year Annexation Boundary
- City Boundary



August 18, 2016

**JUB**  
J-U-B ENGINEERS, INC.

THE LANGDON GROUP  
A JUB Company

GATEWAY MAPPING INC.  
A JUB Company

OTHER J-U-B COMPANIES



# Attachment 5

Existing and Future Parks with  
Walkable Access Map



# Smithfield City

## Existing and Future Parks & Trails

**Legend**

**Trails**

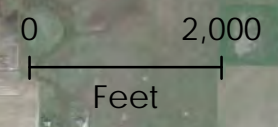
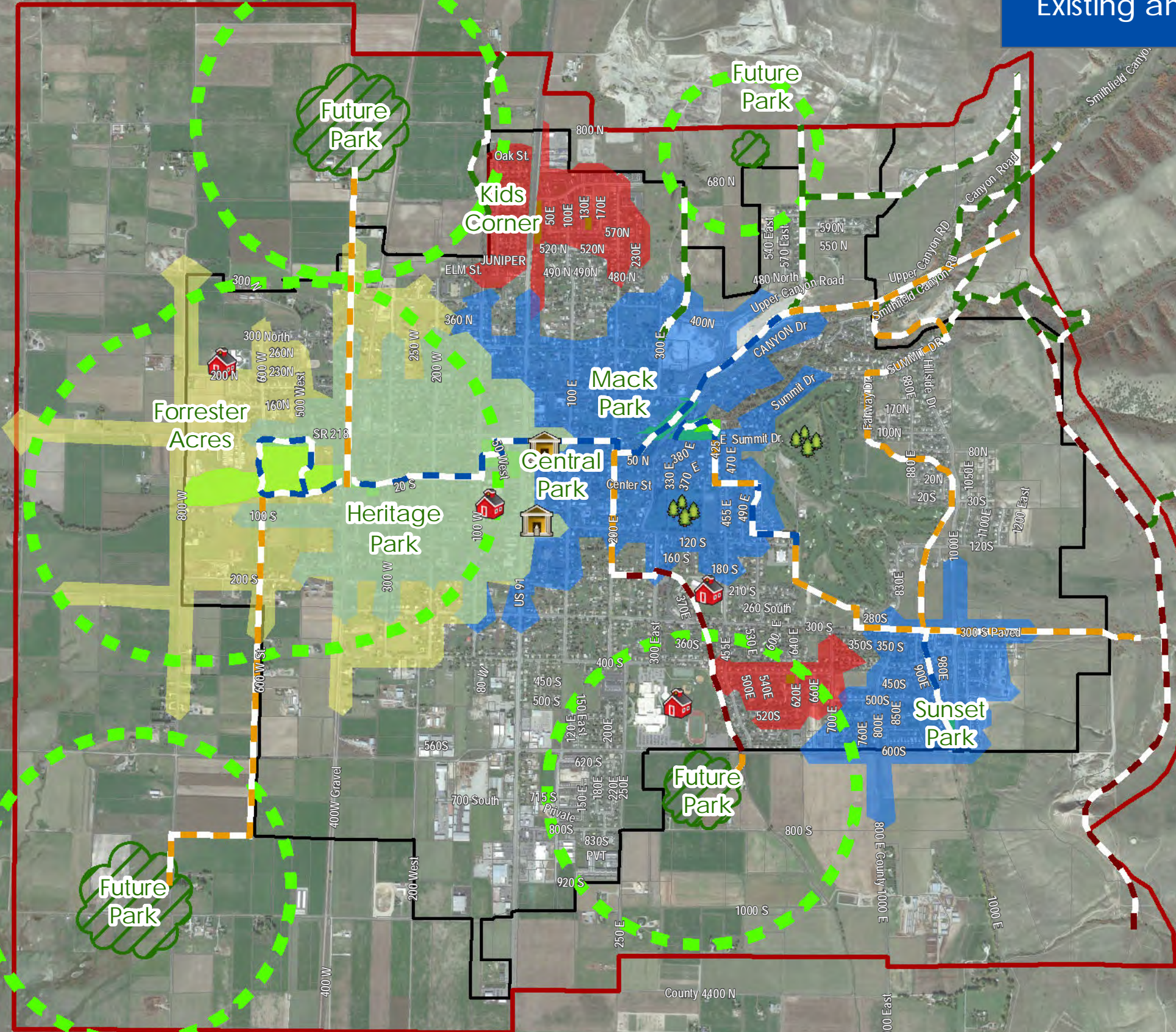
- Existing
- Existing Canyon
- Future
- Non City-Owned

**Service Areas**

- Future Park Service Areas
- Community Park Service Areas (3/4 mile walking distance)
- Neighborhood Park Service Areas (1/2 mile walking distance)
- Mini Park Service Areas (1/4 mile walking distance)

**Other**

- 15 Year Annexation
- Future Parks
- Existing Parks
- City Boundary



November 3, 2016

**JUB**  
J-U-B ENGINEERS, INC.

THE LANGDON GROUP  
GATEWAY MAPPING INC.

OTHER J-U-B COMPANIES

Imagery © Google